



THE BANDA SEA

the region that has it all

“We spent a glorious week in the Banda Sea with Expedition Biru. The diving was amazing, crystal clear, pristine reefs and loads of marine life. The organisation was superb and the knowledge and enthusiasm about the marine life, the area and the history on board was fantastic. Certainly up there with one of our best trips. We already booked the next one!” Annie & Will from the UK



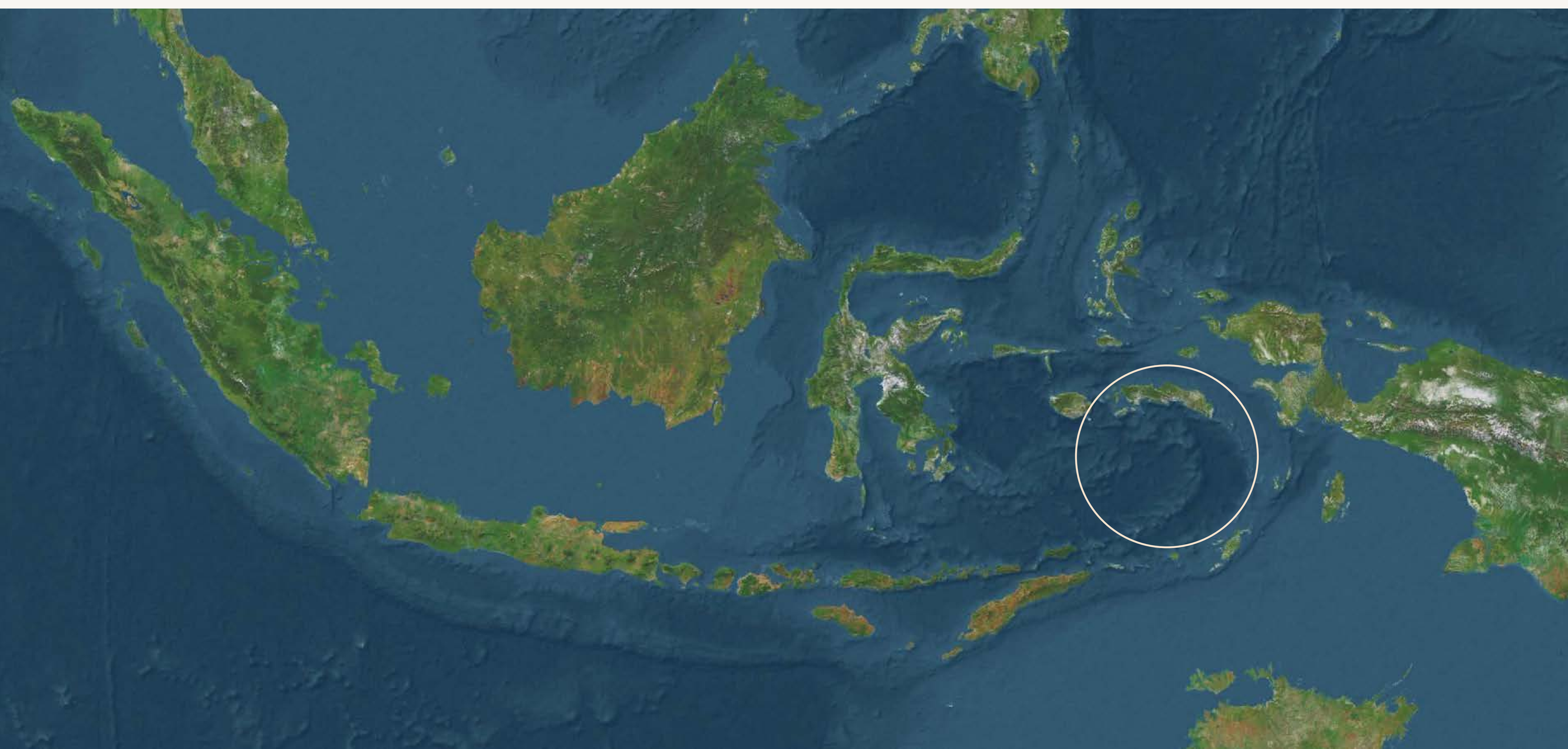
“My Banda Sea diving trip was an amazing experience, offering the perfect blend of adventure and tranquility. Exploring the underwater world, surrounded by colourful marine life and coral reefs, was truly very impressive. The crystal-clear waters and professional guidance made every moment safe and unforgettable. Learning about marine science and local history added a unique depth. A must-do for anyone seeking both thrill and serenity!” Robbie from the US

join us, in the

BANDA SEA

14-20 september | 7 days | ~18 dives | ~11 pax

- Immerse yourself into the **rich history and marine life** of the Banda Sea, enjoying workshops and lectures enriching your experience on-board.
- Spend a week on EcoXplorer's tradition phinisi liveaboard, which directly supports the **EcoNusa Foundation's social initiatives**, incl. access to healthcare and education for remote and underserved communities.
- Contribute towards Expedition Biru's program that funds the **dive education of young women** in Raja Ampat and the Banda Sea.
- Marvel at thriving coral reefs, **hammerhead sharks**, countless sea snakes, macro critters and cetaceans such as **pygmy blue whales**.



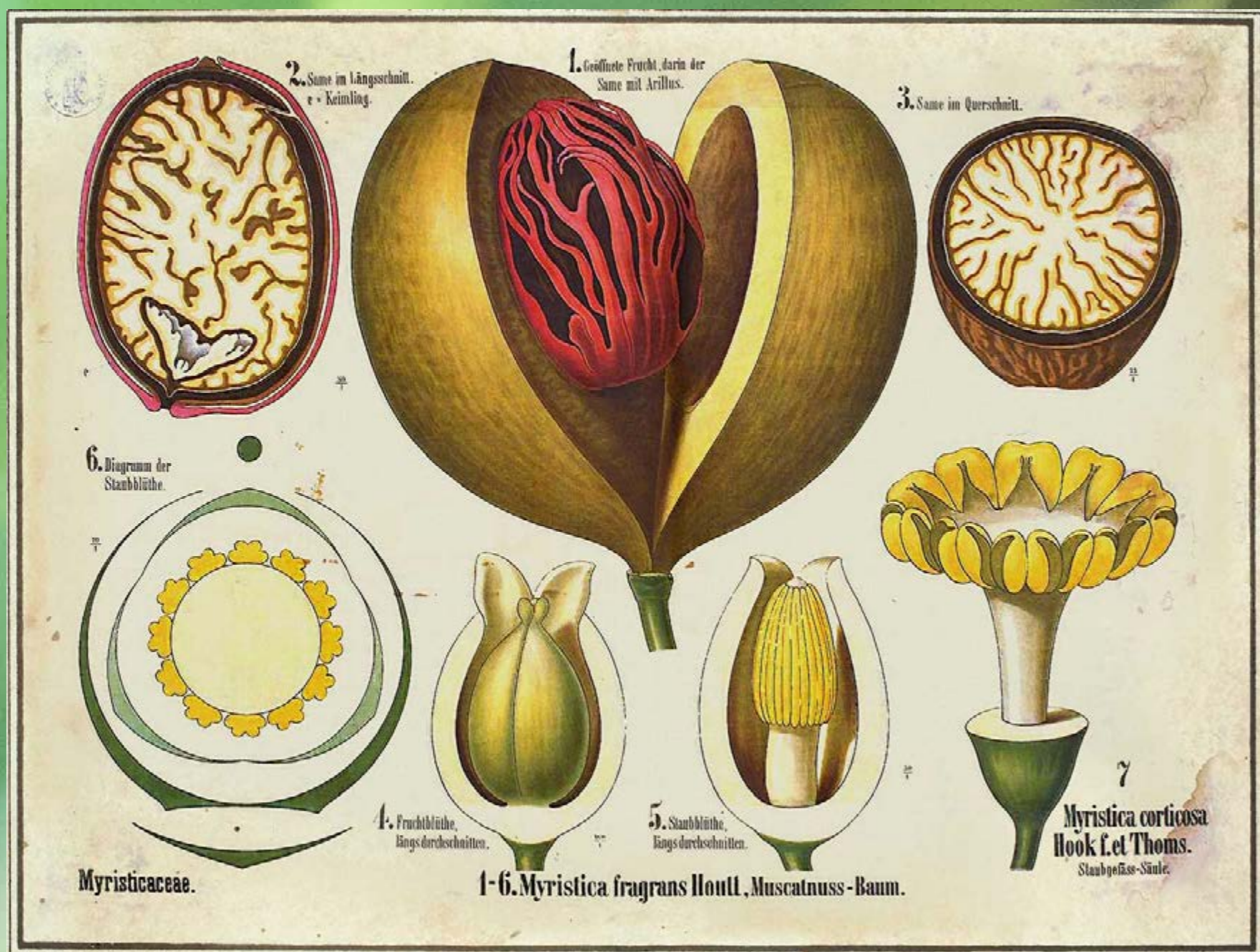
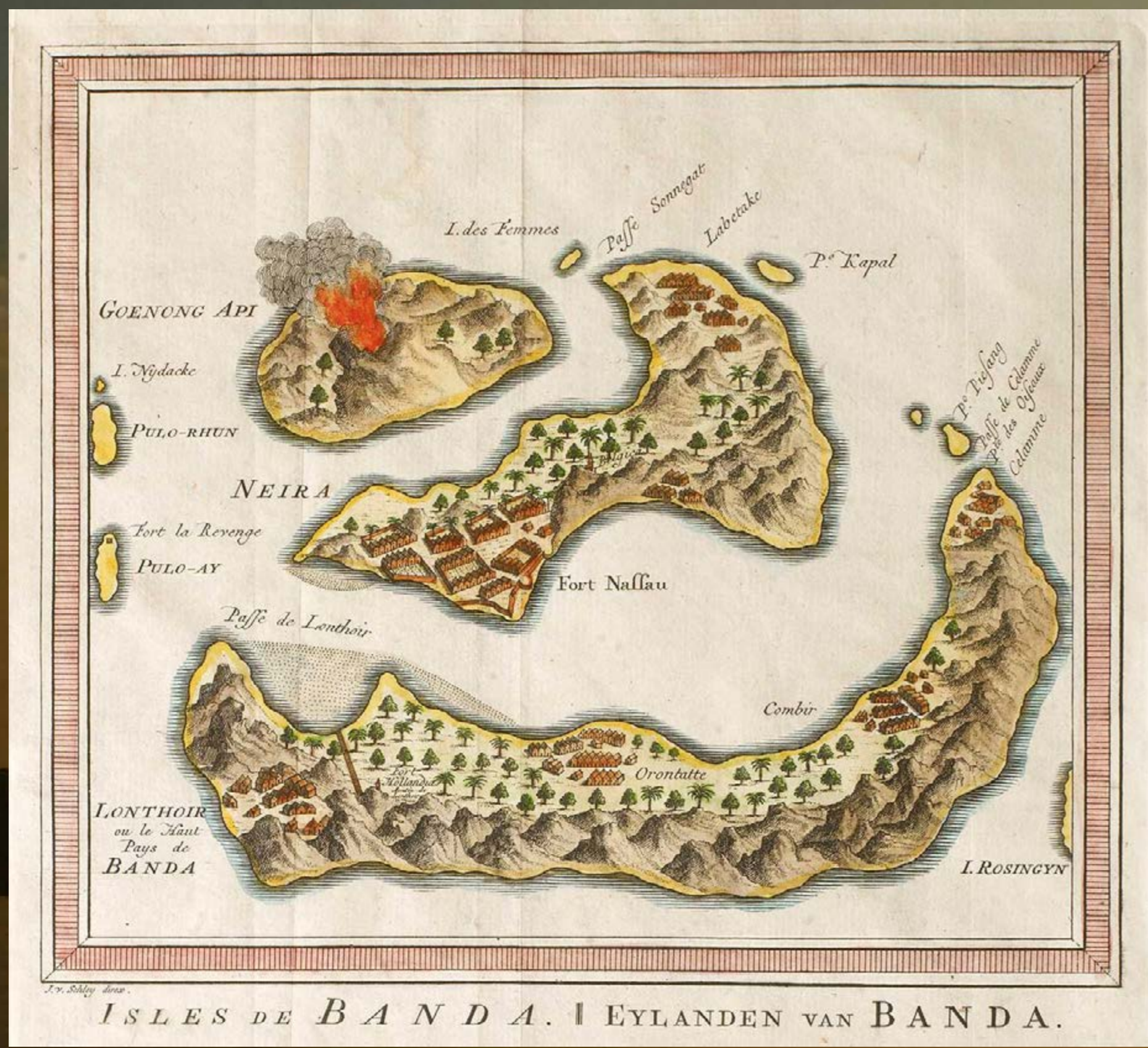
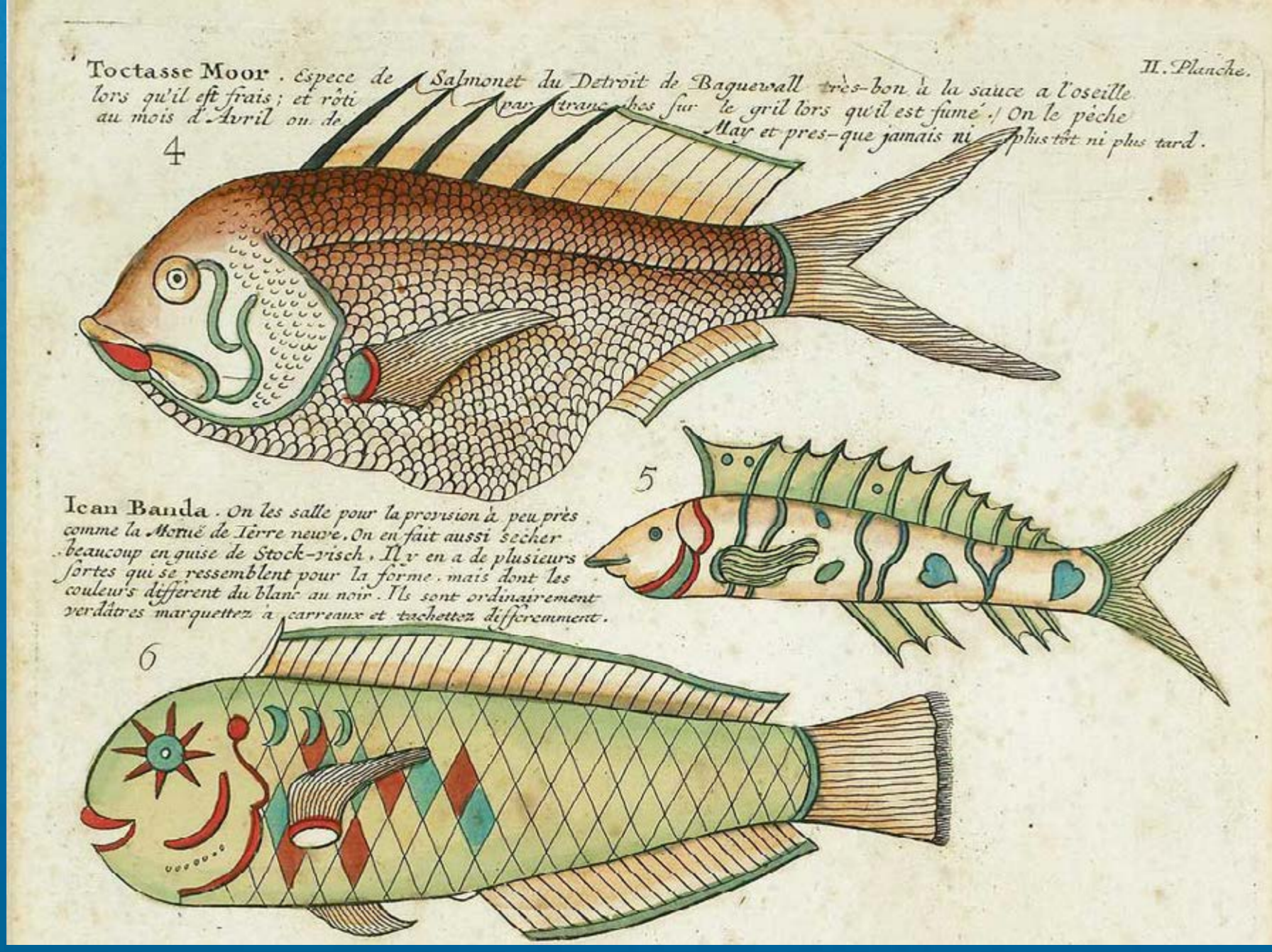


in the heart of this expedition lies the wild and geologically extraordinary Banda Sea: a region shaped by the collision of the Sahul Shelf and the Sunda Shelf. Here, continental plates plunge to form the 7,000-metre-deep Weber Deep, creating powerful upwellings that fertilise the ocean and attract pelagic life. As the liveaboard cruises above this vast underwater basin, guests explore waters known for schooling hammerheads, tuna, rays, and the possibility of pygmy blue whales and other elusive cetaceans drawn to these nutrient-rich currents.

Above the surface, the story is just as dramatic. The remote Banda Islands were once the world's only source of nutmeg, a spice so valuable it reshaped global power. In the 17th century, control of these tiny islands drove colonial conflict and immense wealth under the Dutch East India Company, influencing trade routes, territorial exchanges, and political boundaries that still echo today. New York was New Amsterdam before. Centuries-old forts and quiet plantations now stand as reminders of a history that altered the course of empires.



This voyage combines thrilling diving with learning: onboard shark conservation lectures, immersive storytelling on the spice trade's global impact, and hands-on photography workshops designed to capture the vast marine life. Profits support dive education of young women in Raja Ampat and the Banda Sea region, plus contribute to the EcoNusa Foundation. The result is an expedition that is biologically spectacular, culturally informative, purposeful and unlike anywhere else in Indonesia.



inclusions GBP 2150

Approximately 18 dives

All meals, unlimited water/coffee/tea

Airport transfers

Starlink internet

History tour on Banda Neira

Visit to nutmeg plantation

Visit to Fort Belgica

Shark conservation lecture

Banda islands history lecture

Underwater photography mentoring

Folder of UW and trip photos

exclusions

Flights

National park and conservation fees

Dive gear rental

Alcoholic beverages and soft drinks

Crew tip



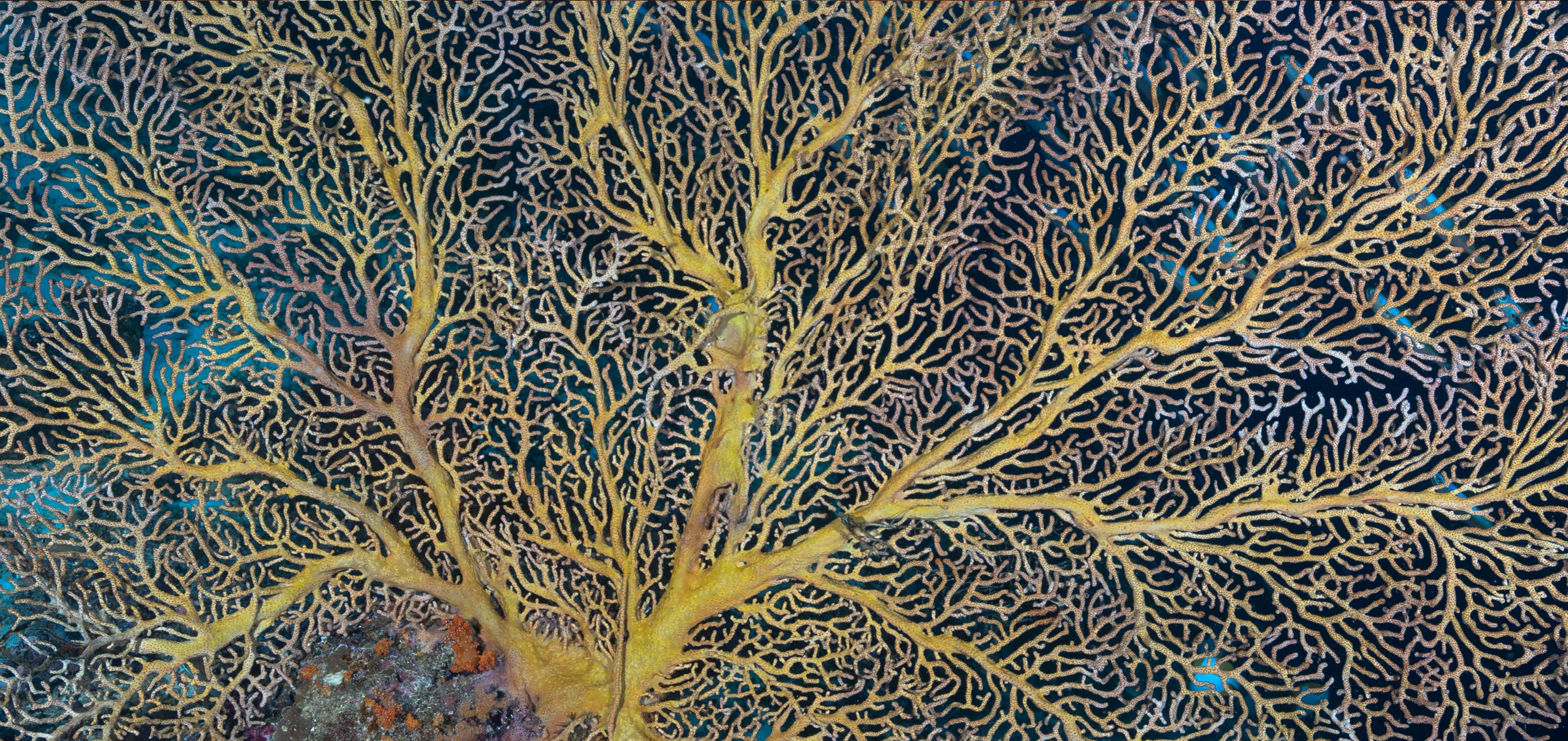
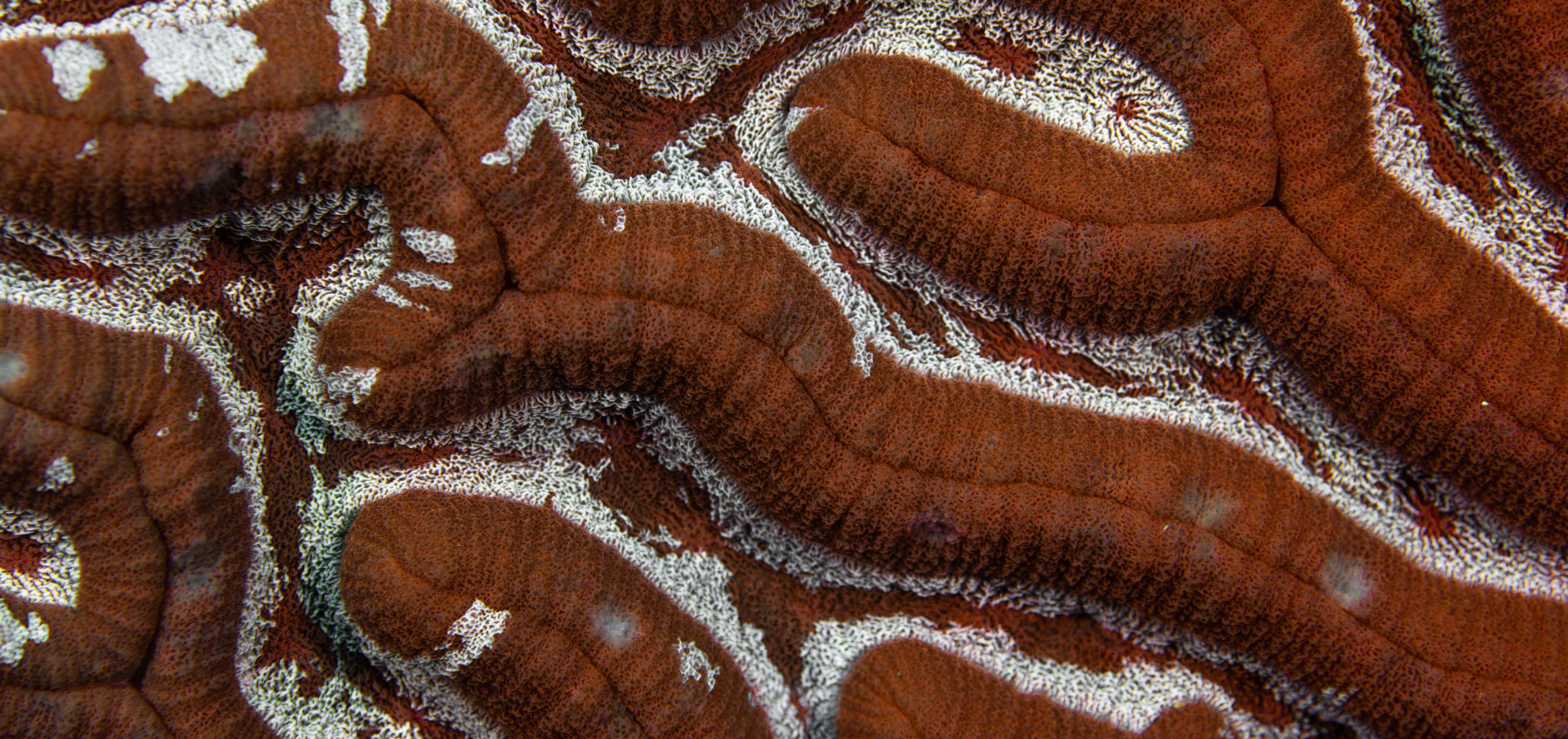


the phinisi

The traditionally built EcoXplorer Liveaboard has been thoughtfully refitted into a comfortable expedition vessel accommodating just 12 guests in 5 cabins, each with private en-suite bathrooms, hot water, and air-conditioning. Cabin categories include a spacious Sea View cabin with a queen bed and bunk, Deluxe cabins with a mix of queen and bunk configurations, and cozy Standard bunk cabins — all designed for comfort after a full day of exploration.

Social areas include an indoor multifunctional salon for dining and briefings, as well as a generous outdoor deck with panoramic views — ideal for relaxing between dives or enjoying sunset evenings at sea. Fresh meals are prepared daily and served in communal dining spaces. The vessel is supported by two tenders for dive operations and shore excursions, and features a dedicated dive area with ample space for gear and equipment, making EcoXplorer perfectly suited for immersive diving expeditions.





The Banda Sea, plunging over 7,000m deep between the Sunda and Sahul shelves, experiences nutrient-rich upwellings that fuel incredible marine life. This unique ecosystem attracts schooling hammerhead sharks, pygmy blue whales, and diverse reef life across volcanic islands, seamounts, and sheer drop-offs, making it a world-class diving destination.



our why

Often described as one of the last strongholds of thriving coral reefs, Raja Ampat and the wider Banda Sea remain extraordinary — yet they are not immune to change. The impacts of warming seas are increasingly visible, from coral stress to shifting fish populations and fewer large pelagics. In response, our liveaboard expeditions were designed to directly fund opportunities for young local women to enter the dive industry and marine conservation sector.

We provide PADI dive certifications and structured dive internships, equipping participants with internationally recognised qualifications, practical experience, and ongoing mentorship. We collaborate exclusively with women-owned dive operators, and all training is delivered by female instructors — creating strong role models while ensuring financial support flows back into women within the industry.

Each expedition helps us train the next generation of female dive professionals, building skills and leadership from within the region and contributing to a more inclusive, resilient future for Indonesia's reefs and communities.







“Our program provides young women of East Indonesia the training, mentorship and pathways to open the door of marine conservation careers and lead the way as stewards of their own region”

Secure your spot today

info@expeditionbiru.com
Limited spots available.

